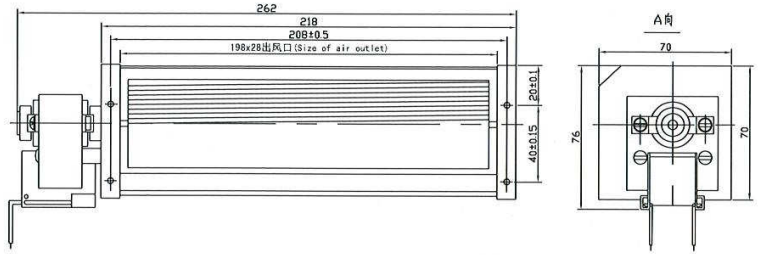
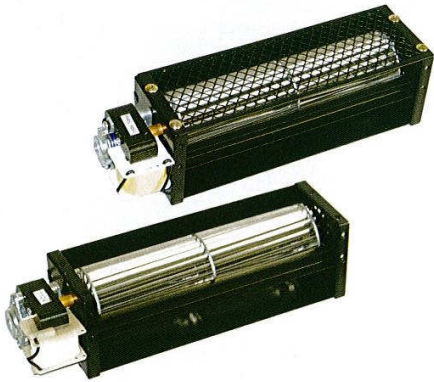


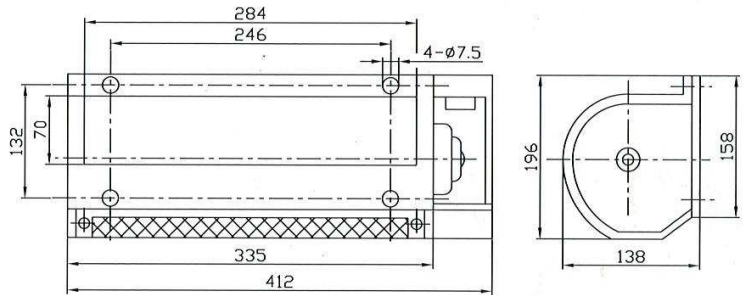
QF-200 控制柜散热风机  
Control cabinet cooling fans



QF-200 参数:

电压(AC)V	频率(Hz)	功率(W)	噪音db(A)	风量(M <sup>3</sup> /min)	转速(r/min)
100/220	50/60	18	≤ 47	1.9	2100±100

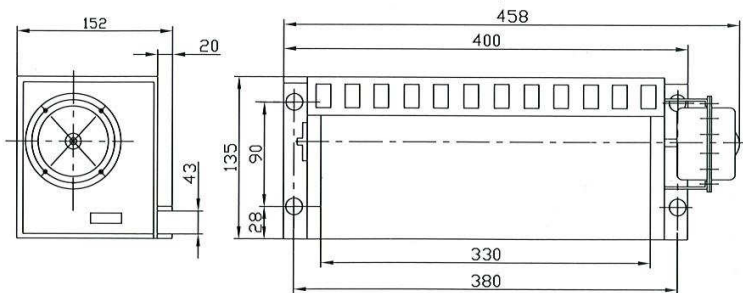
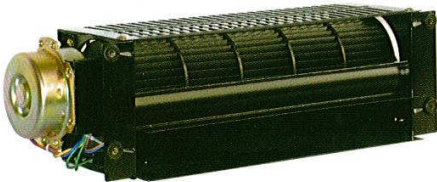
QF-280 横流风机  
Cross flow fan



QF-280 参数:

电压(AC)V	频率(Hz)	功率(W)	噪音db(A)	风量(M <sup>3</sup> /min)	转速(r/min)
220	50/60	40	≤ 50	5±0.5	1100±100

QF-330 横流风机 \*  
Cross flow fan



QF-330参数:

电压(AC)V	频率(Hz)	功率(W)	噪音db(A)	风量(M <sup>3</sup> /min)	转速(r/min)
100/220/230	50/60	25	≤ 47	6±0.5	1100±100